

# Summary of 2025 activities

**TileCal-IFIC Group Meeting**

**Antonio Cervelló - 16/12/2025**



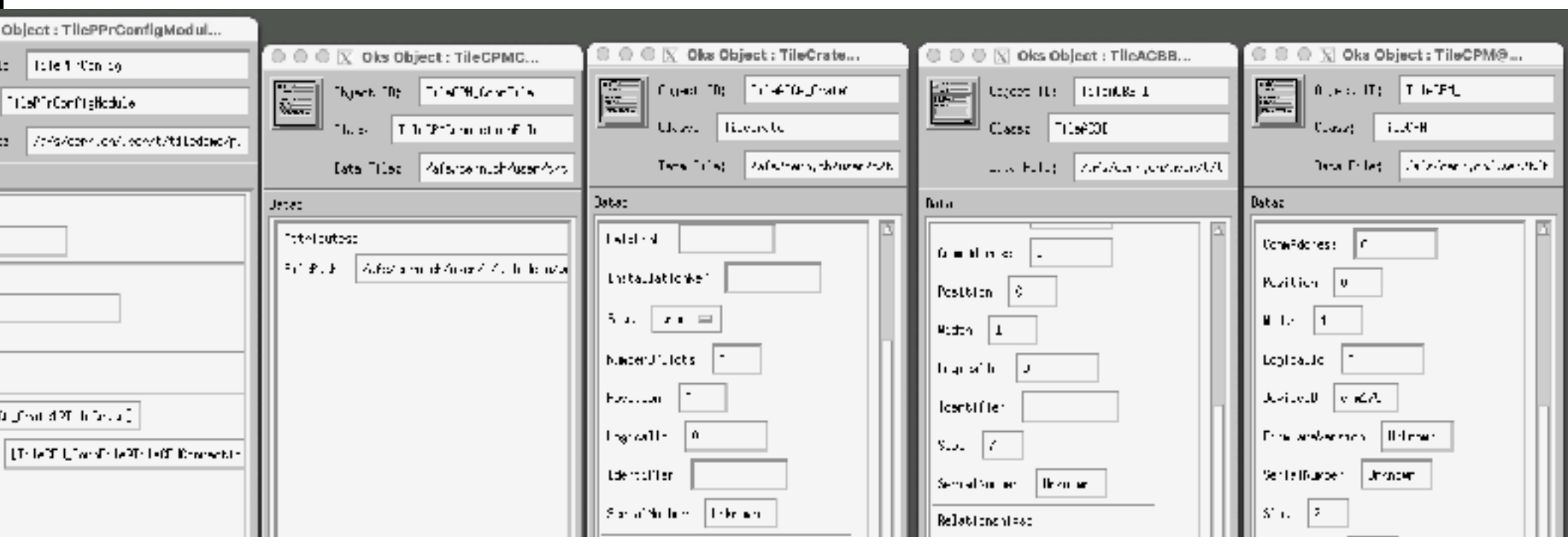
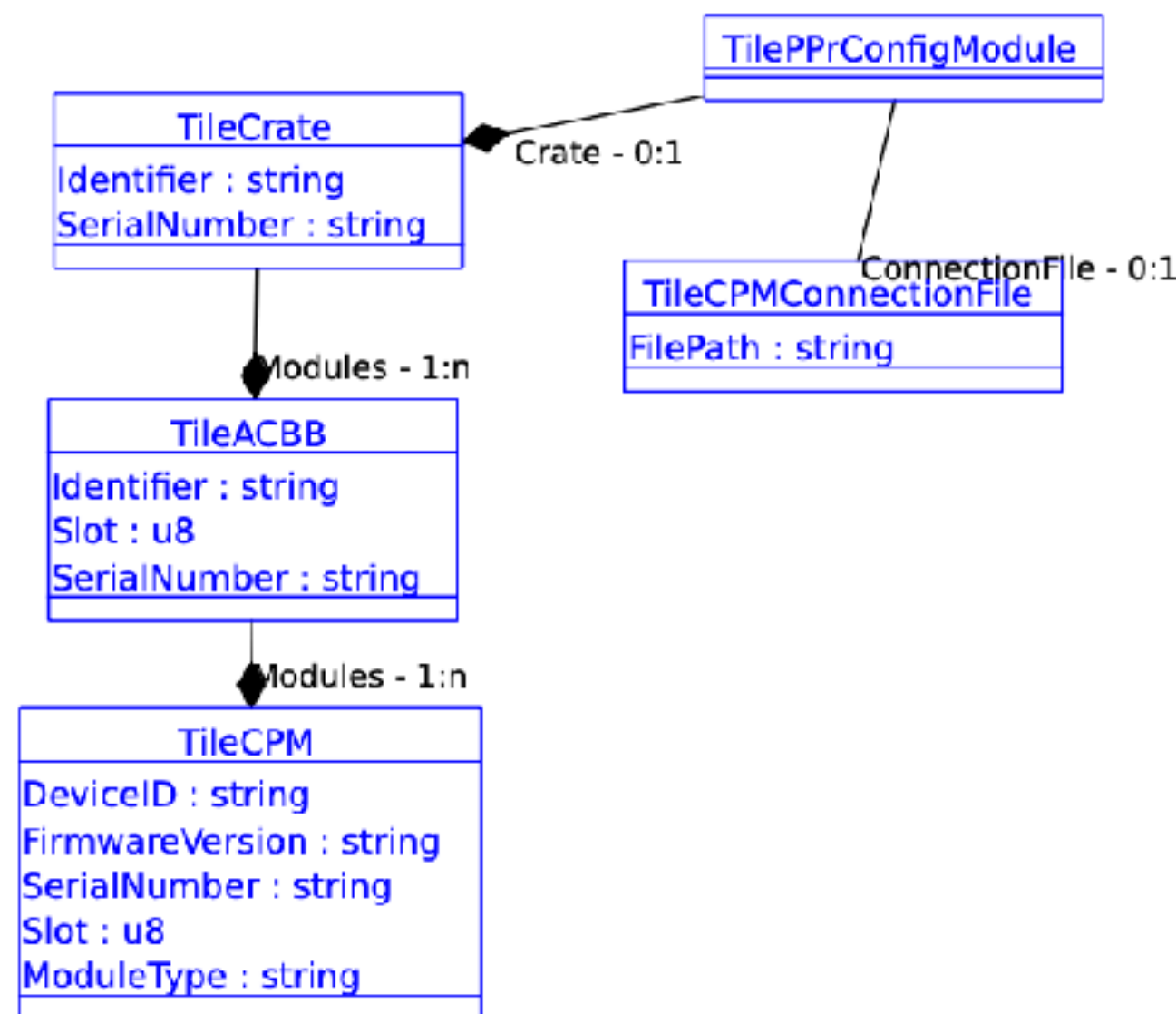





# TDAQ / FELIX

- **TilePPrConfig**

- New segment for TDAQ following FSM
- Used TROOPER libraries
- Able to read OKS database
- First version with same setup as the python script



- **RCD template generator**
    - Script that generates the basic design for a TDAQ FSM design
  - **FELIX / SWROD**
    - Different setups configured
      - **Testbeam** -> Now dismantled
      - **B175** -> Moved infrastructure from TB (FULL MODE - Phase-II LTI)
      - **Valencia** -> Same setup as in 175 (can be moved to ALTI if needed)
      - **P1** -> Basic setup in standalone partition, need to change FLX FW to Phase-II (issues in Phase-I FW for CPM)
    - Script to decode CPM and TDAQi data during integration week
- 

[illegible]

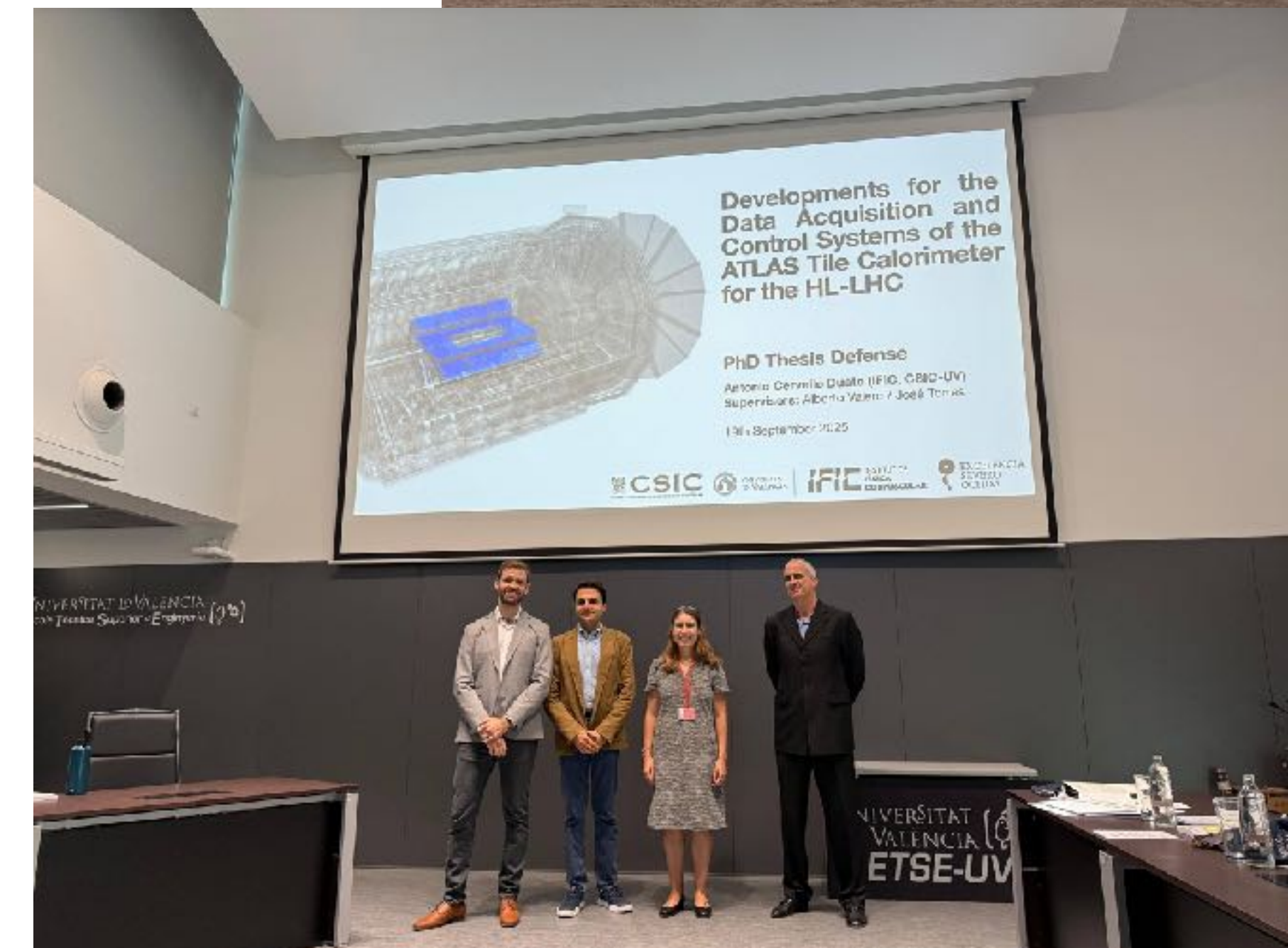
# Talks/Posters/Others

- ATLAS Week February 2025 - TALK
- BTTB 2025 - TALK
- ANIMMA 2025 - POSTER
- 4th SoC WorkShop - TALK



# Talks/Posters/Others

- ATLAS Week February 2025 - TALK
- BTTB 2025 - TALK
- ANIMMA 2025 - POSTER
- 4th SoC WorkShop - TALK
- PhD Thesis





# Farewell

- My last meeting!
- Moving to a private company in January
- Thank you very much for all these years!





# Farewell

- My last meeting!
- Moving to a private company in January
- Thank you very much for all these years!



<https://tilecal-valencia-toni.docs.cern.ch/>





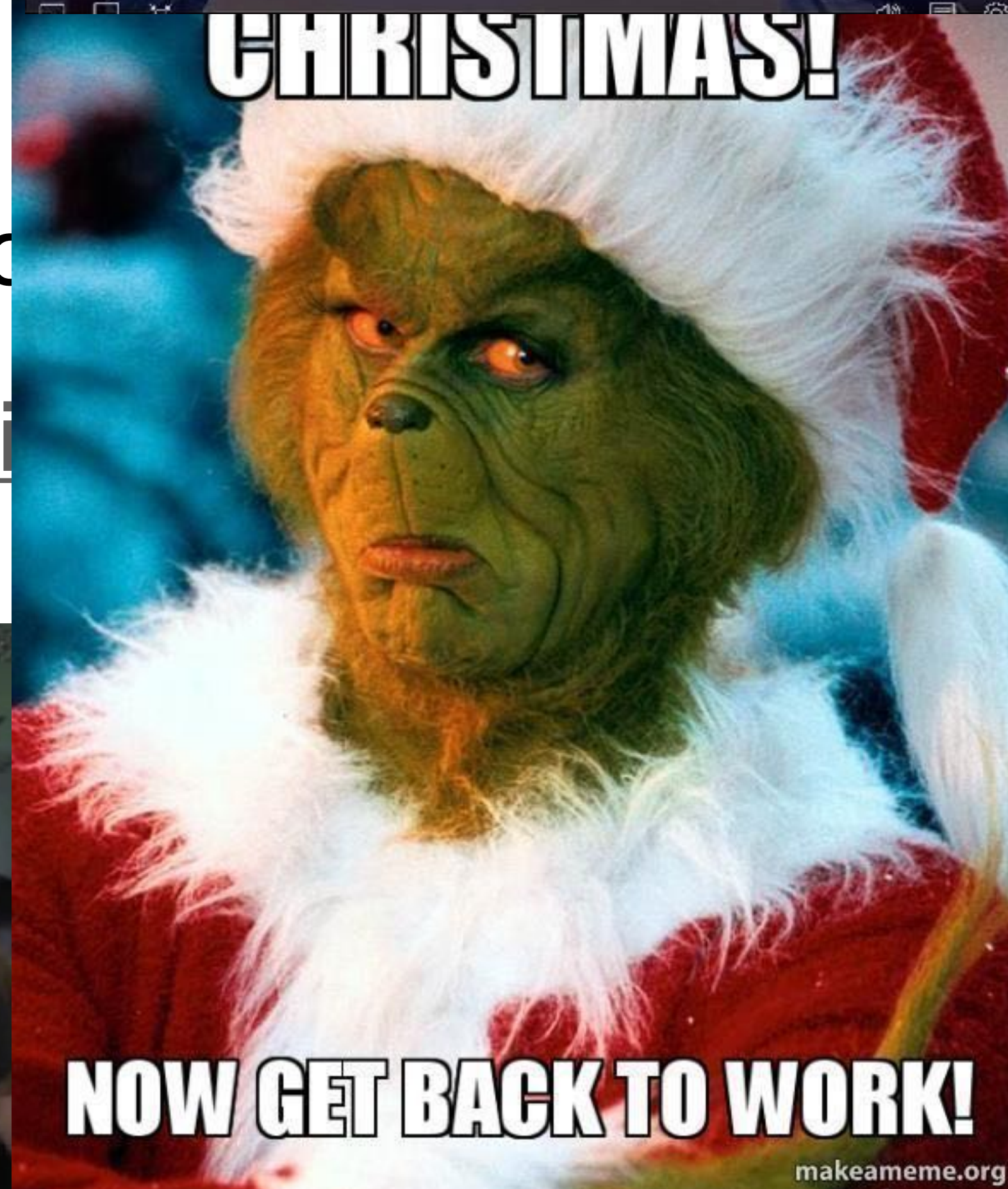
# Farewell

- My last meeting!
- Moving to a private
- Thank you very much

<https://t>



[s.cern.ch/](https://cern.ch/)







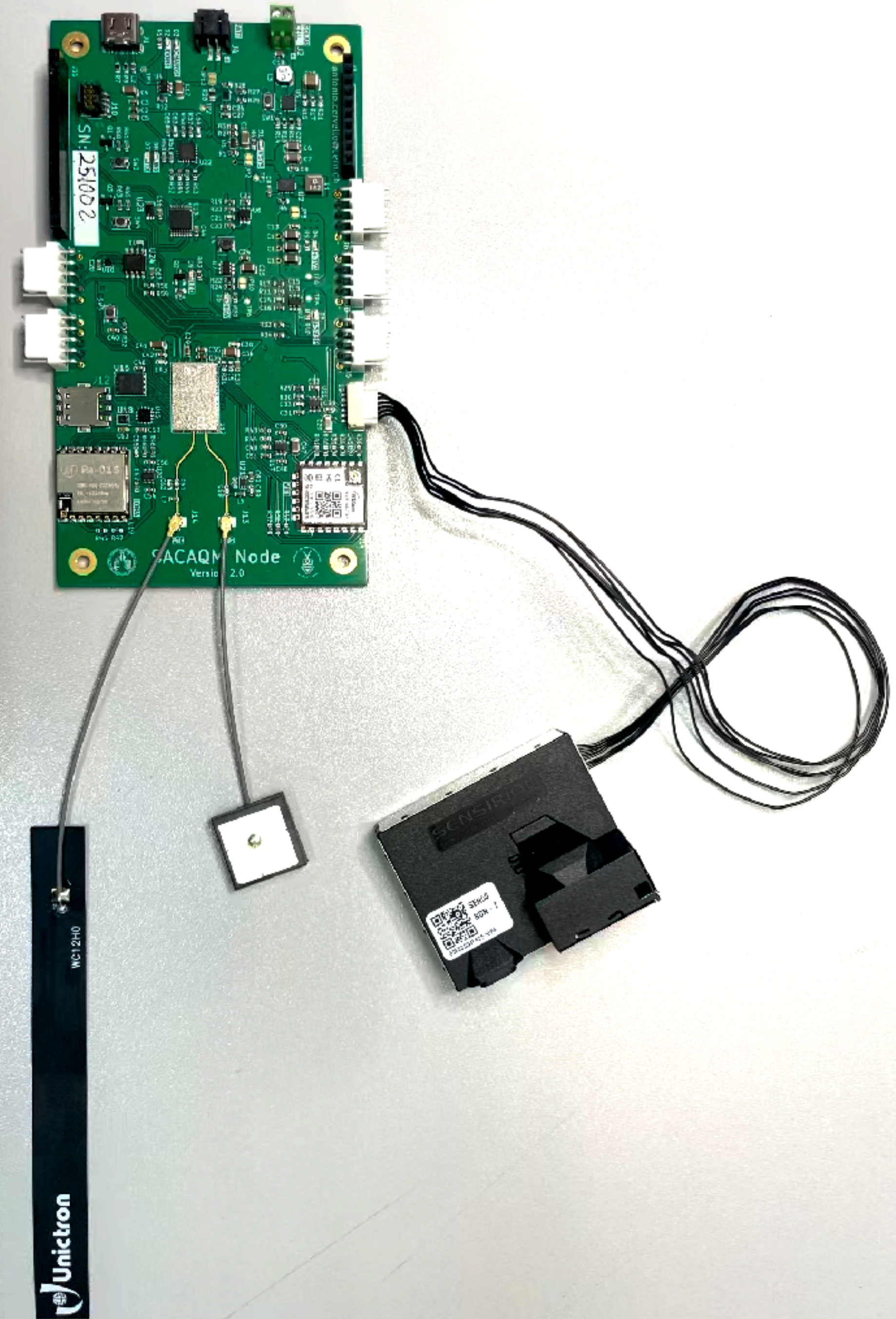
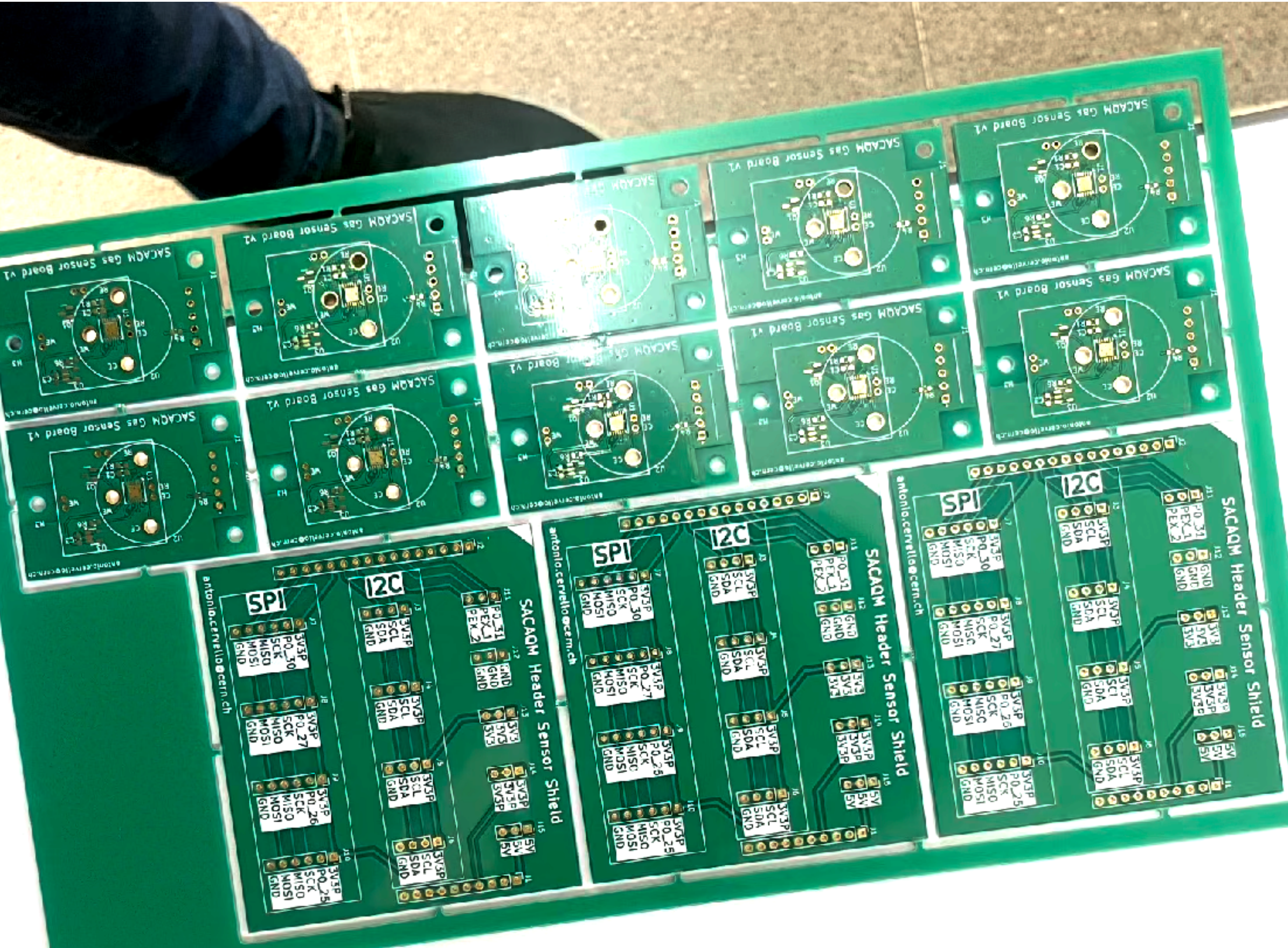
# Summary of 2025 activities

**TileCal-IFIC Group Meeting**

**Antonio Cervelló - 16/12/2025**



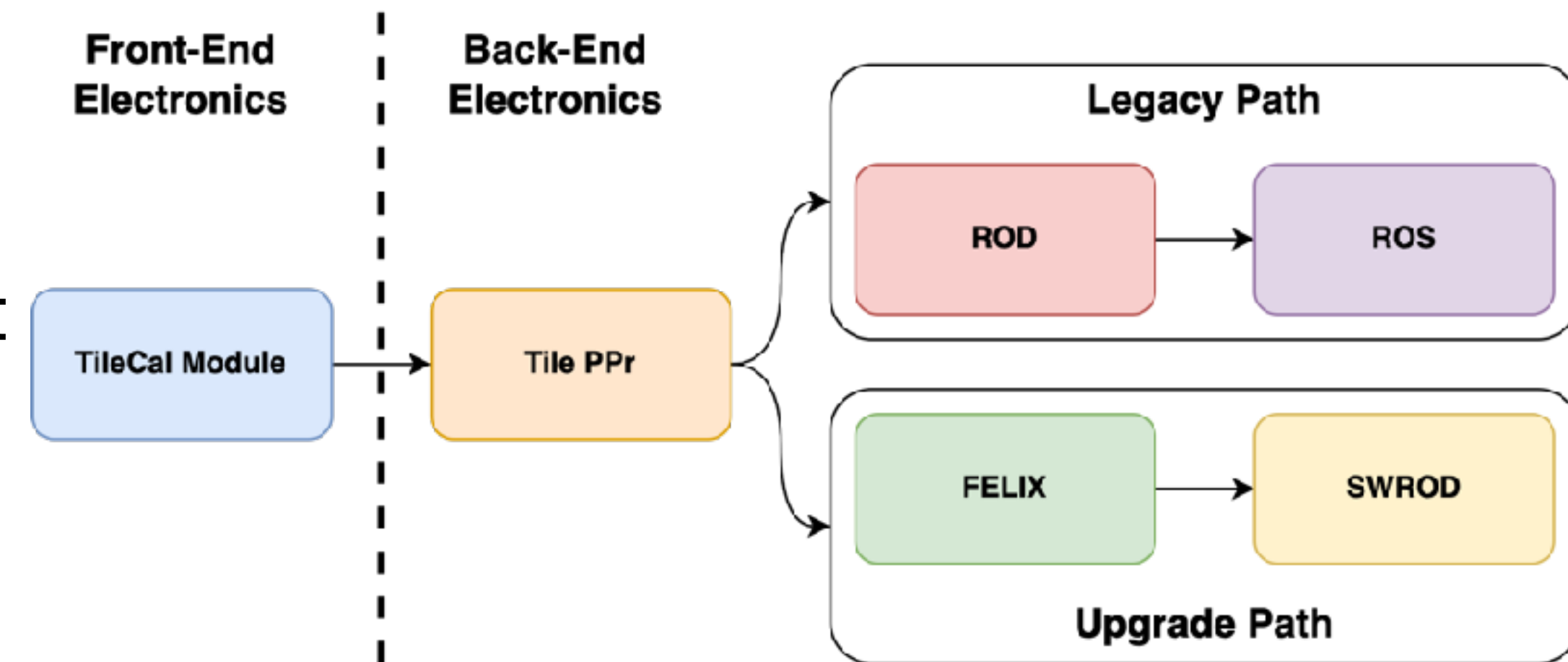
# SACAQM Master node





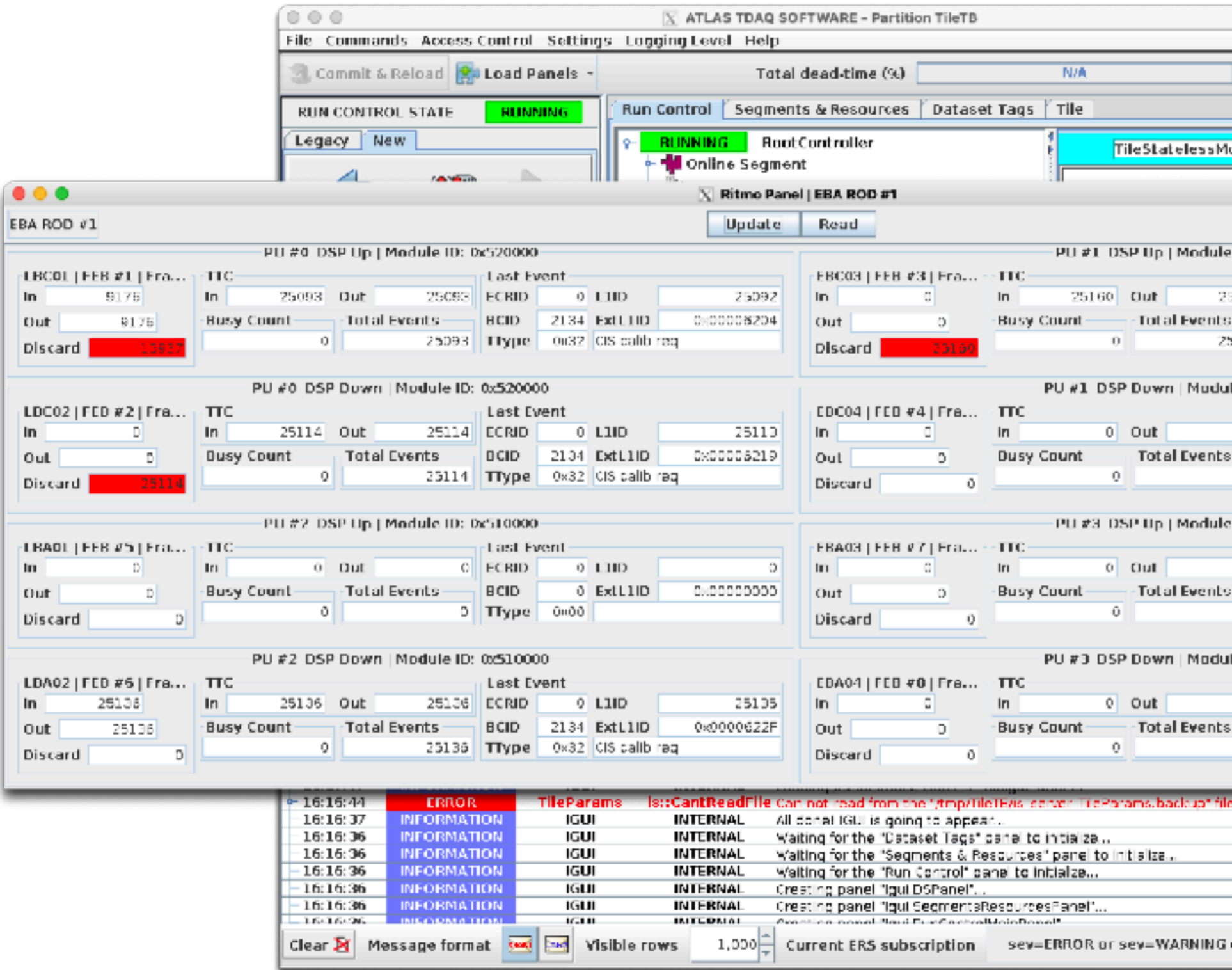
# FELIX @ P1

- **FELIX configured in ATLAS using supervisord**
  - Able to connect to e-links and receive data with no issues (Laser run - low rate)
- **Issues at “high” rate**
  - Seems the buffer for the CPM is too short and at high rates the data gets mixed
  - A new CPM FW version was developed by Fernando, to be tested
- **SWROD being configured**
  - Learnt the “proper way” to do it in P1
  - Installed in calibrations partition, to be tested



# Testbeam and CERN setups

- Migration of the system to TDAQ 12
  - New Run Number
  - Kernel updates and TDAQ drivers
  - Infrastructure is up and running
  - More info at [TB ELOGs](#)
- New server (valtical27.cern.ch) configured at B175 (ROD Lab)



Hostname	Purpose	Status
pcatltiltb01	Main	UP
pcatltiltb02	DCS	UP
pcatltiltb03	???	UP
pcatltiltb10	???	UP
pcatltiltb11	private DHCP/Controlhub	UP
pcatltiltb12	???	UP
pcatltiltb14	OPCUA	UP
pcatltiltb21	DQM	UP
pcatltiltb22	DQM	UP
pcatltiltb23	DQM	UP
pcatltiltb24	DQM	UP
pcatltiltbfelix	FELIX	UP
sbctil-ttc-03	TTC	UP
sbctil-rod-03	ROD	UP
pctil-ros-01	ROS	UP
pc-til-tb-mon-03	Mon PC	UP
pc-til-tb-mon-04	Mon PC	UP
pc-til-tb-mon-05	Mon PC	UP
pcatltiltb08	REB (/data)	UP
pcatltiltb13	Reco (/data1)	UP
pcatltiltb15	SWROD	UP



# TileCoM developments

- **Tested TileCoM in new carrier board**
  - Power **OK**
  - Comms **NOK**
    - Need to continue the test
      - Able to detect the PHY, missing configuration for direct path
    - Only TileCoM available has died -> TPS issue, waiting for replacement
- **Automate test procedure**
  - Playing with remote control of the Power Supplies to do an automatic procedure to check the TileCoM with no intervention
    - Helps to maintain a procedure and follow always the same steps