

# **ACBB updates**

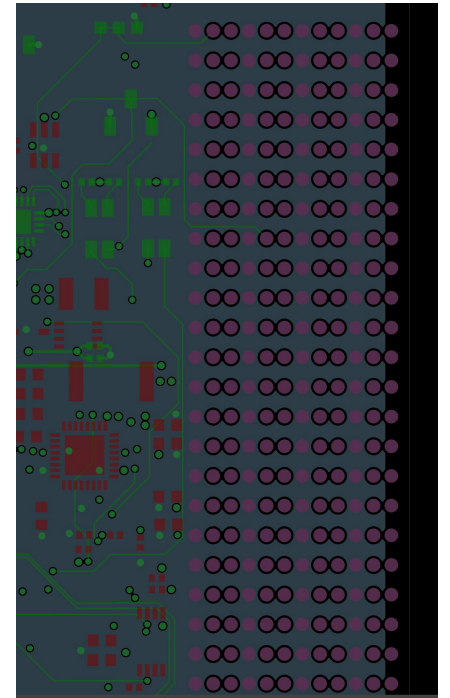
**Alberto Valero - 24/09/2025**

# ACBB PreProduction

- 4 units assembled – under revision
- Assembly: Some LEDs mounted with reversed polarity (same in all units)
- Electric tests correct in all of them
- High-speed lines being tested.
  - Some links in CPM → TDAQi with errors ( seems to be a problem in CPM)
- Testbench SW being updated to perform Communication test with 4 CPMs and one TDAQi with one single JTAG programmer on ACBB connector

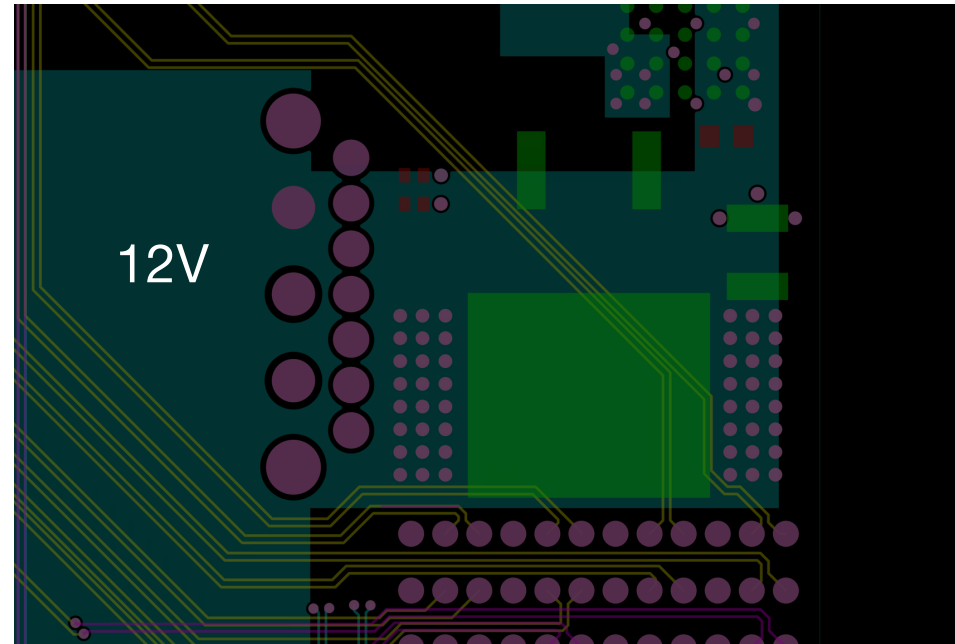
# Changes for final version (so far)

- Extend the ground planes to cover all pins in Z3 connector
- Review all high speed lines to smooth angles



# Changes for final version (so far)

- Extend the ground planes to cover all pins in Z3 connector
- Review all high speed lines to smooth angles
- Extend the 12V power planes



# Changes for final version (so far)

- Extend the ground planes to cover all pins in Z3 connector
- Review all high speed lines to smooth angles
- Extend the 12V power planes
- Move pins in TPS and other components with DAMM problem (Air Gap  $\geq 0.2$  mm)
  - Fabricate the board with GREEN color
- Reduce pads in SW13 (front-panel connector)
- TileCoM GbE ports
  - Switch GbE  $\rightarrow$  TCoM : GEM0 ✓
  - Zone2  $\rightarrow$  TCoM: ~~GEM1~~  $\rightarrow$  GEM 2 ✗

