



# The European Grid Initiative, IBERGRID and the Spanish NGI

**Dr. Carlos Fernández Sánchez (CESGA)**  
**NGI-ES Operations Coordinator**

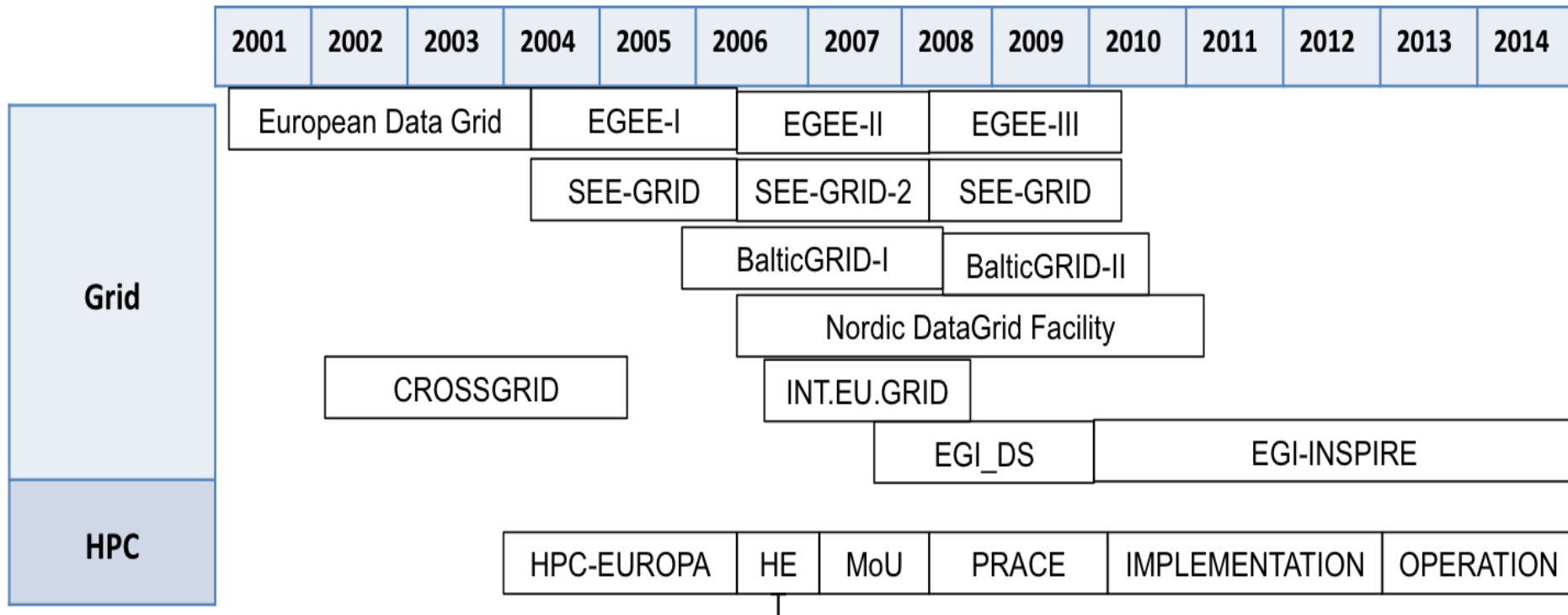
**Dr. Isabel Campos Plasencia (IFCA)**  
**EGI.eu Executive Board**

**G. Borges, J. Gomes, M. David, H. Gomes (LIP), J. López (CESGA)**



- **EGI Framework**
- **Setup of the foundation EGI.eu**
- **EGI-Inspire Project**
- **IBERGRID**
- **Conclusions**

# Background



Cyclic project funding through EU Framework needs to be consolidated




# Background: EGI-DS

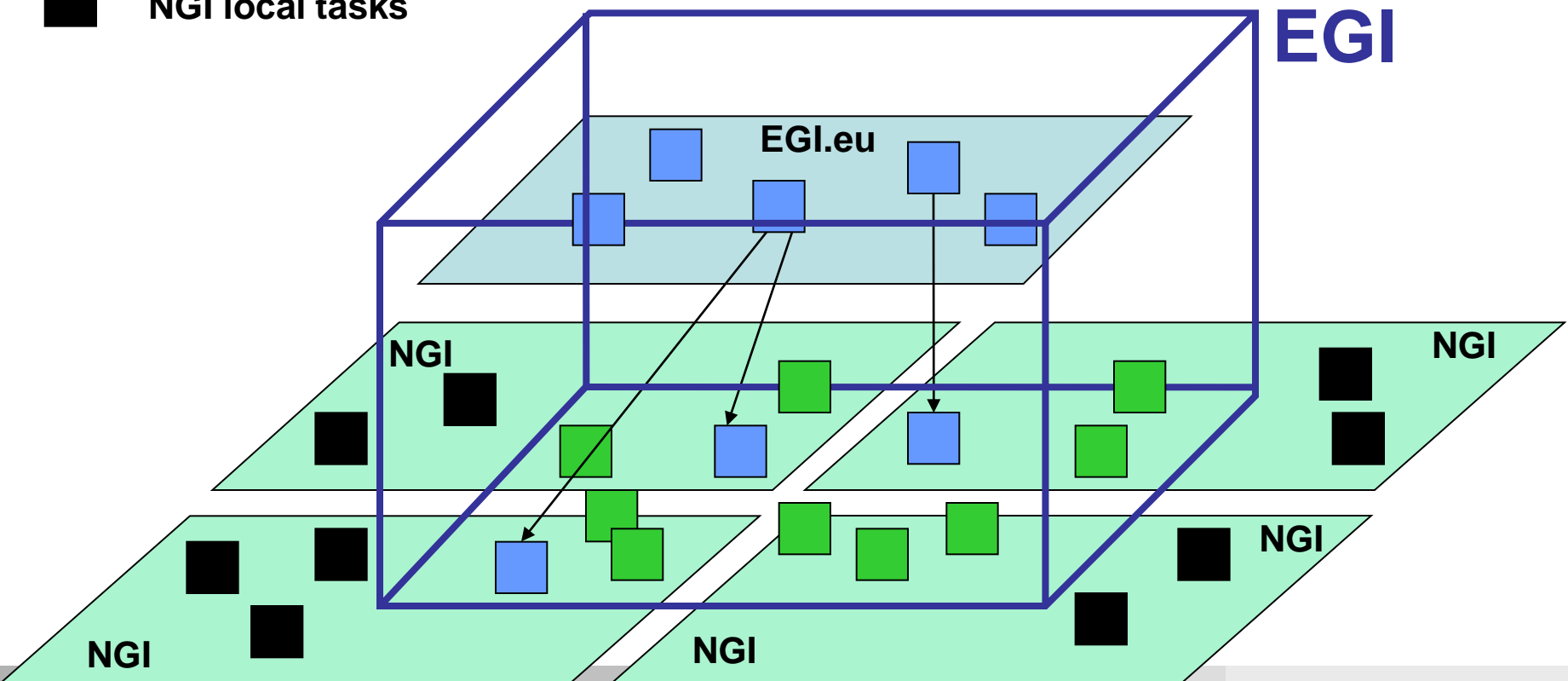
- The project **EGI Design Study** (FP7, Sept. 2007- Dec. 2009)
  - Organized the participation of the countries in EGI by assembling the EGI Council
  - Fostered the creation of National Grid Initiatives in the countries
    - Letters of Intent were requested to the Ministries
    - A Memorandum of Understanding was devised in order to move ahead before having formal Statutes
  - Organized the election of the physical location of EGI.eu
    - Amsterdam (Science Park)
  - Organized and follow-up on the developments of the first EGI Councils (July 2009 – December 2009)
  - Concluded with the publication of the EGI-DS Blueprint
    - Guidelines, description of tasks needed to build the European Grid Infrastructure as a service for researchers

<http://web.eu-egi.eu/documents/other/egi-blueprint/>

# EGI Objective

Establishment of a sustainable Grid Computing service for the European research area

-  EGI.eu global services
-  NGI international tasks
-  NGI local tasks



# Some Definitions

- **EGI**

- EGI is "the collaboration" defined by the EGI-DS Blueprint which is the collection of NGI's and EIROs
- EGI has a Council to take care of general policies and long term strategy

- **EGI.eu**

- EGI.eu is the operational entity to provide general services and coordination useful to all EGI stakeholders
- EGI.eu needs to have a legal entity to perform its duties: foundation
- EGI.eu has a small Executive Board to take care of the legal and management issues of the foundation and has the Council as supervisor

# What takes being a NGI

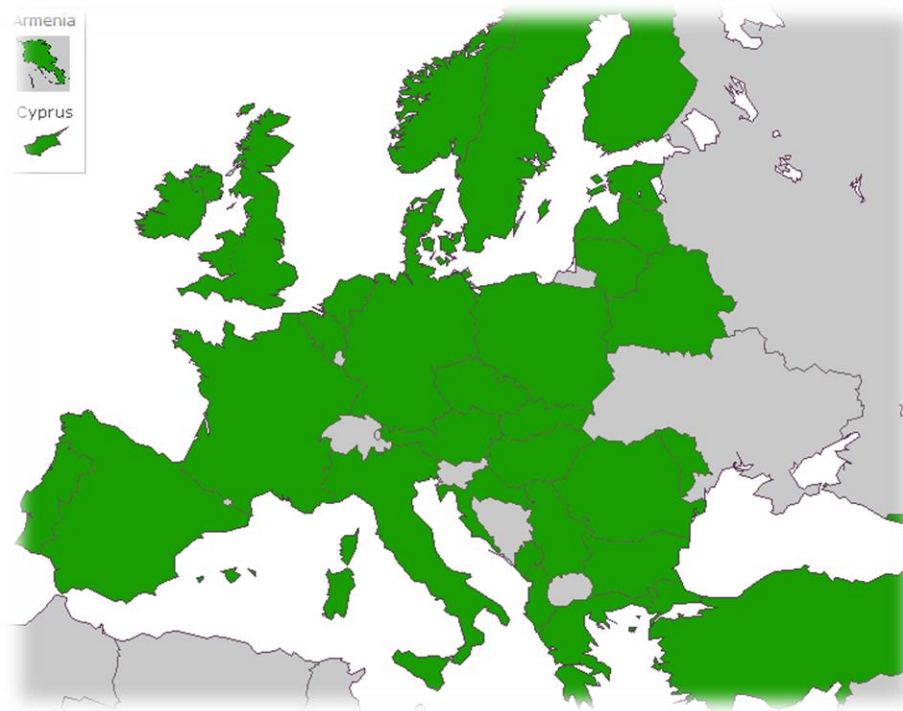
## Each NGI

- ... should be a recognized national body with a **single point-of-contact**
- ... should mobilize national funding and resources
- ... should ensure the operation of a national e-Infrastructure
- ... should support user communities (application independent, and open to new user communities and resource providers)
- ... should contribute and adhere to international standards and policies



# Development of EGI.eu

- **EGI Council first summit on 9<sup>th</sup> July 2009 in Amsterdam**
  - Participated by all the countries and EIROs that had signed the *Letter of Intent* and *Memorandum of Understanding*
    - 34 Countries + 2 EIROs
  - Starting point for discussions about the statutes of **EGI.eu**





# Foundation of EGI.eu



Notary



Michal Turala  
(PL)



Isabel Campos  
(ES)



Arjen van Rijn  
(NL)



Sverker  
Holmgren  
(SE)



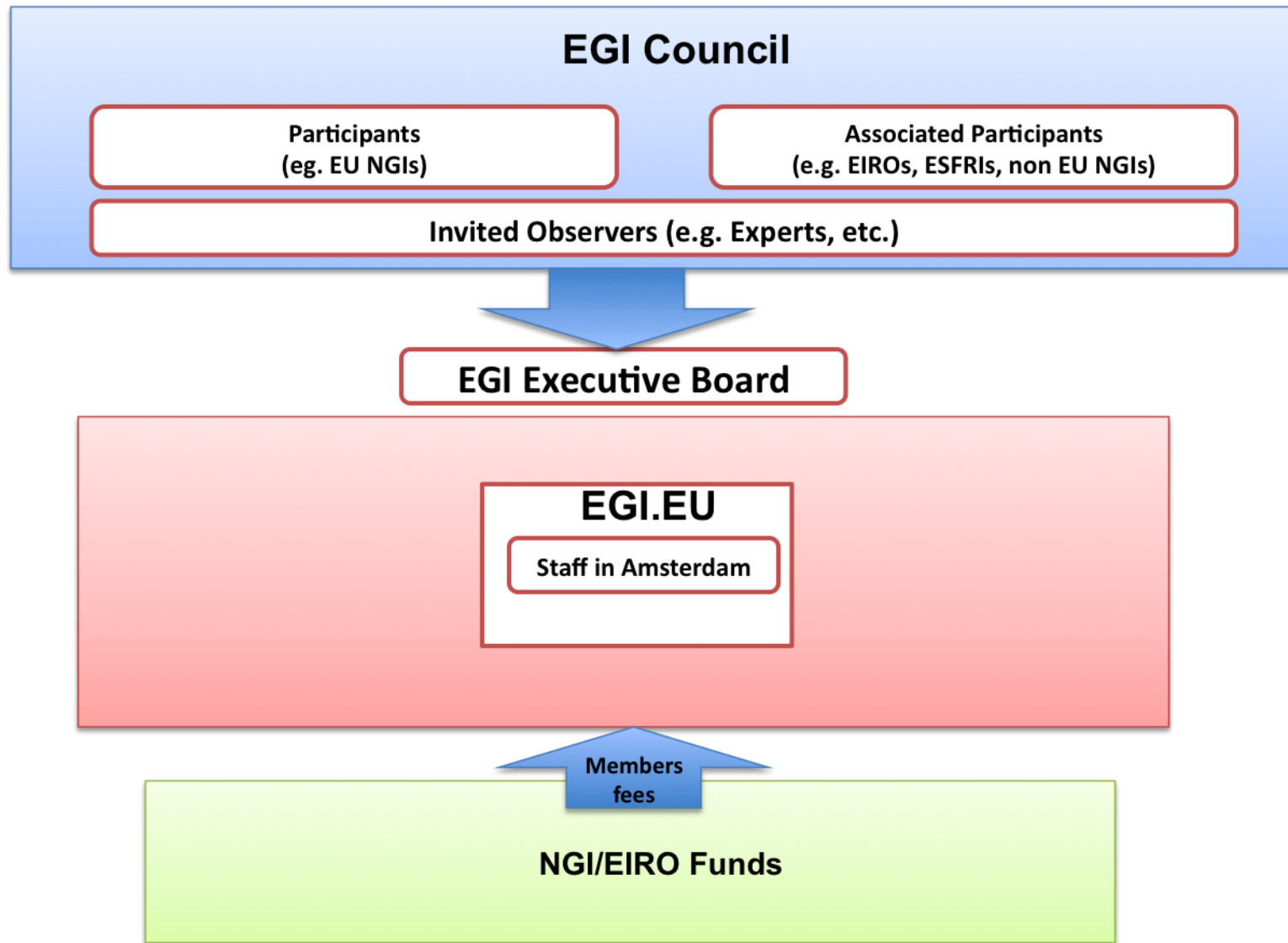
Dieter  
Kranzmueller  
(DE)



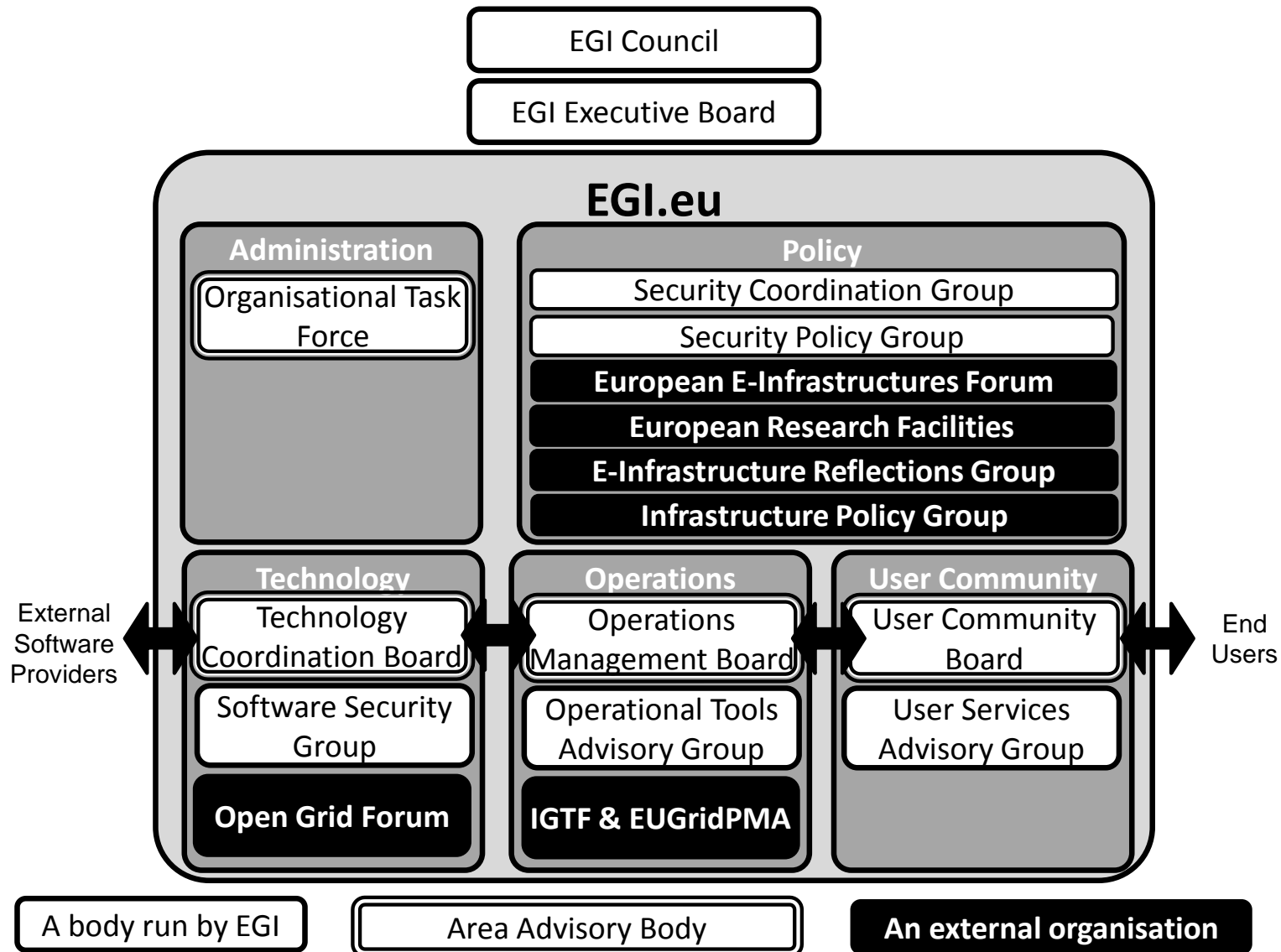
Per Oster  
(FI) as EGI Council Chair

- EGI.eu was founded Monday 8 February 2010 at the notary's office in Amsterdam.
- In this meeting the EGI council approved the statutes for the new EGI.eu foundation
- The Council also elected its Executive Board of 7 members

# EGI.eu Government



# Technical and operational bodies in EGI



# EGL Financial Model

- Long-term vision:
  - **Management**, funded through membership fees
  - **Operations**, funded through usage charges
  - **Innovations**, funded through co-funded grants (EC and others)
- Transition phase:
  - Strong support from EC required to establish EGL model and to keep it at the leading edge of technology
  - Usage fees will not be introduced
  - **EGL.eu Management**, funded through membership fees (1M€/year)
  - **Operations + Innovations**, funded through co-funded EC grant

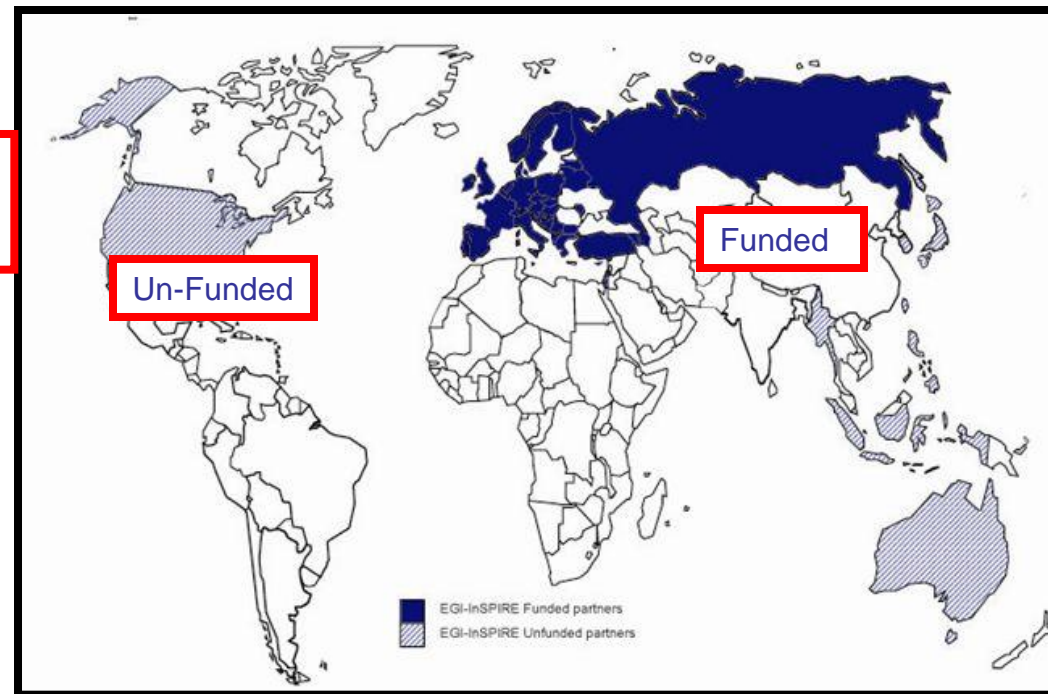
# THE PROJECT EGI-INSPIRE

INTEGRATED SUSTAINABLE PAN-EUROPEAN  
INFRASTRUCTURE FOR RESEARCHERS IN EUROPE

# The EGI-InSPIRE Project

- It is a 4 year project with 25M€ EC contribution
  - Project Total cost 69M€
  - Staff ~ 170FTE

Project Partners (48)  
EGI.eu, 37 NGIs, 2 EIROs, 8 AP

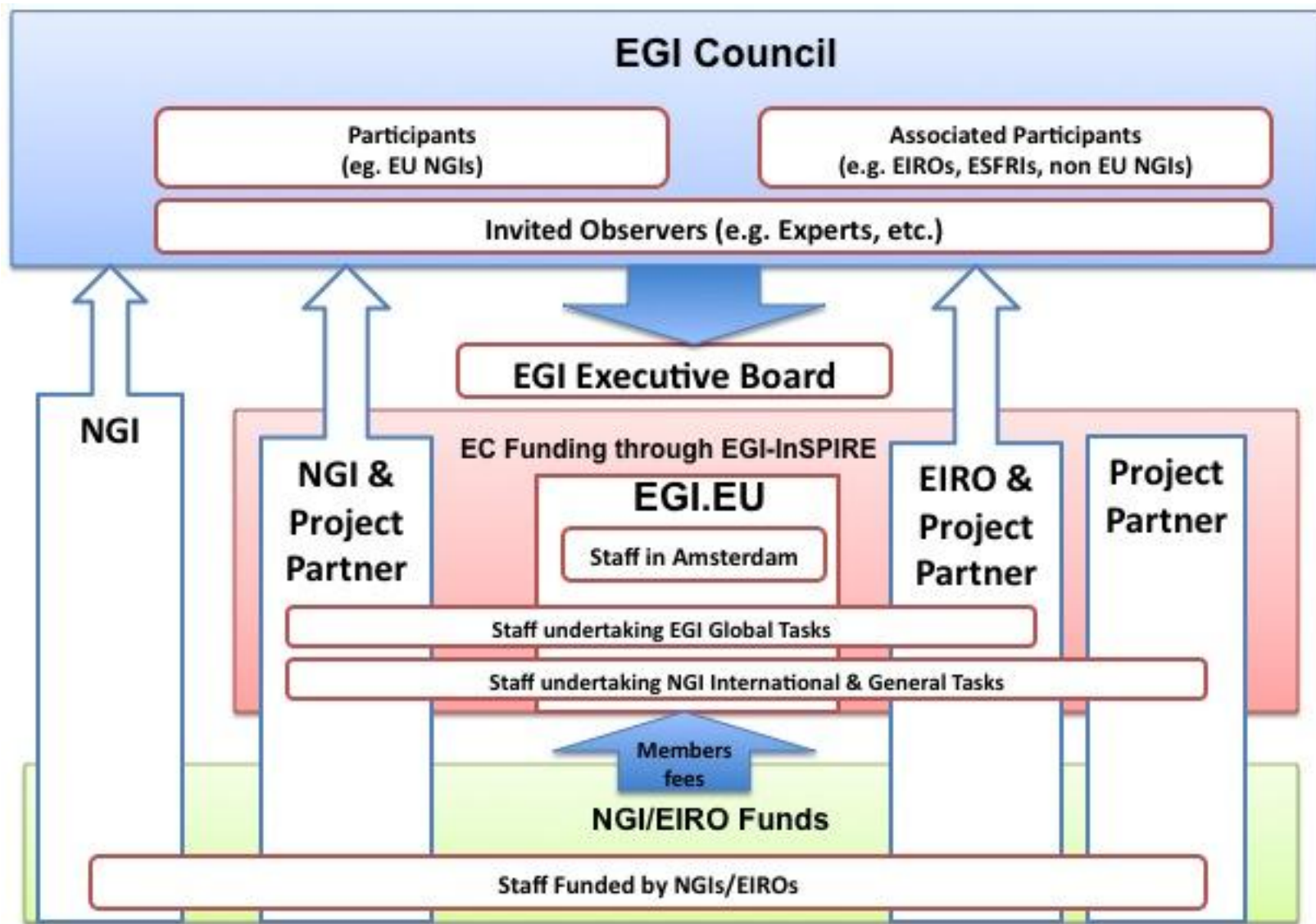


# EGI-InSPIRE Objectives

- EGI-InSPIRE is a 7<sup>th</sup> FP project
- Started 1<sup>st</sup> of May 2010 will go on 4 years
  - Transition to a sustainable federated European e-infrastructure built from national resources
  - Deliver production quality services to all its user communities and users
  - Provide a scalable user support model for international research communities within Europe and their worldwide collaborators
  - Interoperation and interoperability with other e-infrastructures



# Organization of EGI-InSPIRE



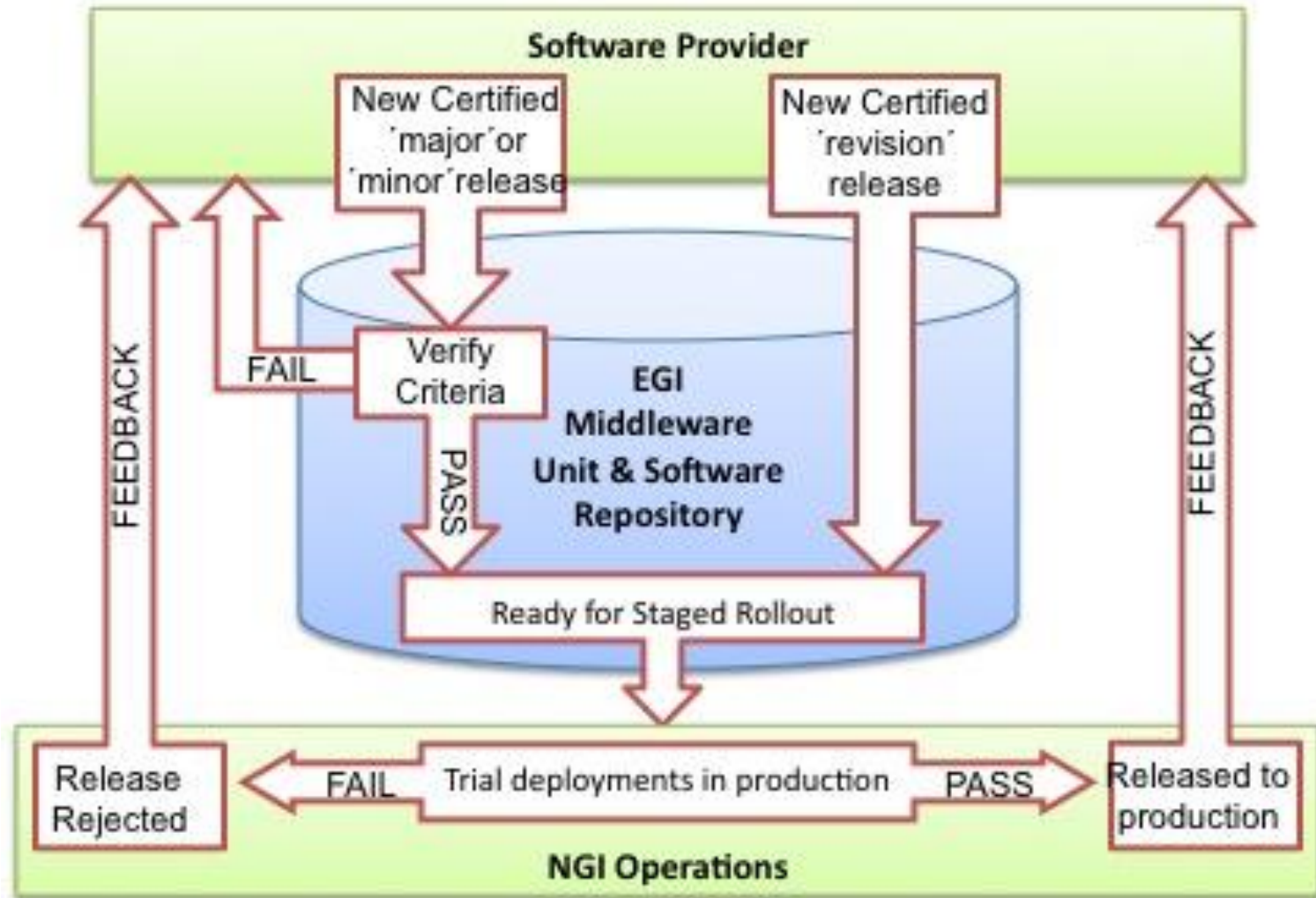
# Who does what in EGI-InSPIRE?

- Internal National Infrastructure & Activities
  - Infrastructure that is not visible internationally
  - Activities with no external dependency
- NGI International Tasks
  - The ‘service’ interface to your national grid
  - Community defined that EGI will enforce
- EGI Global Tasks
  - Provided by EGI.eu through community partners
  - Services needed for the whole EGI community

# EGI: Software design

- Design facts:
  - EGI federation of national grid activities
  - EGI is not developing middleware
  - EGI does not control the resources its users use
- As a consequence:
  - EGI will need to integrate different middleware
  - EGI needs to identify interoperable solutions
- EGI must work with multiple software providers and deployments to achieve its goals

# EGI Software Infrastructure



# EGI Operations: Objectives

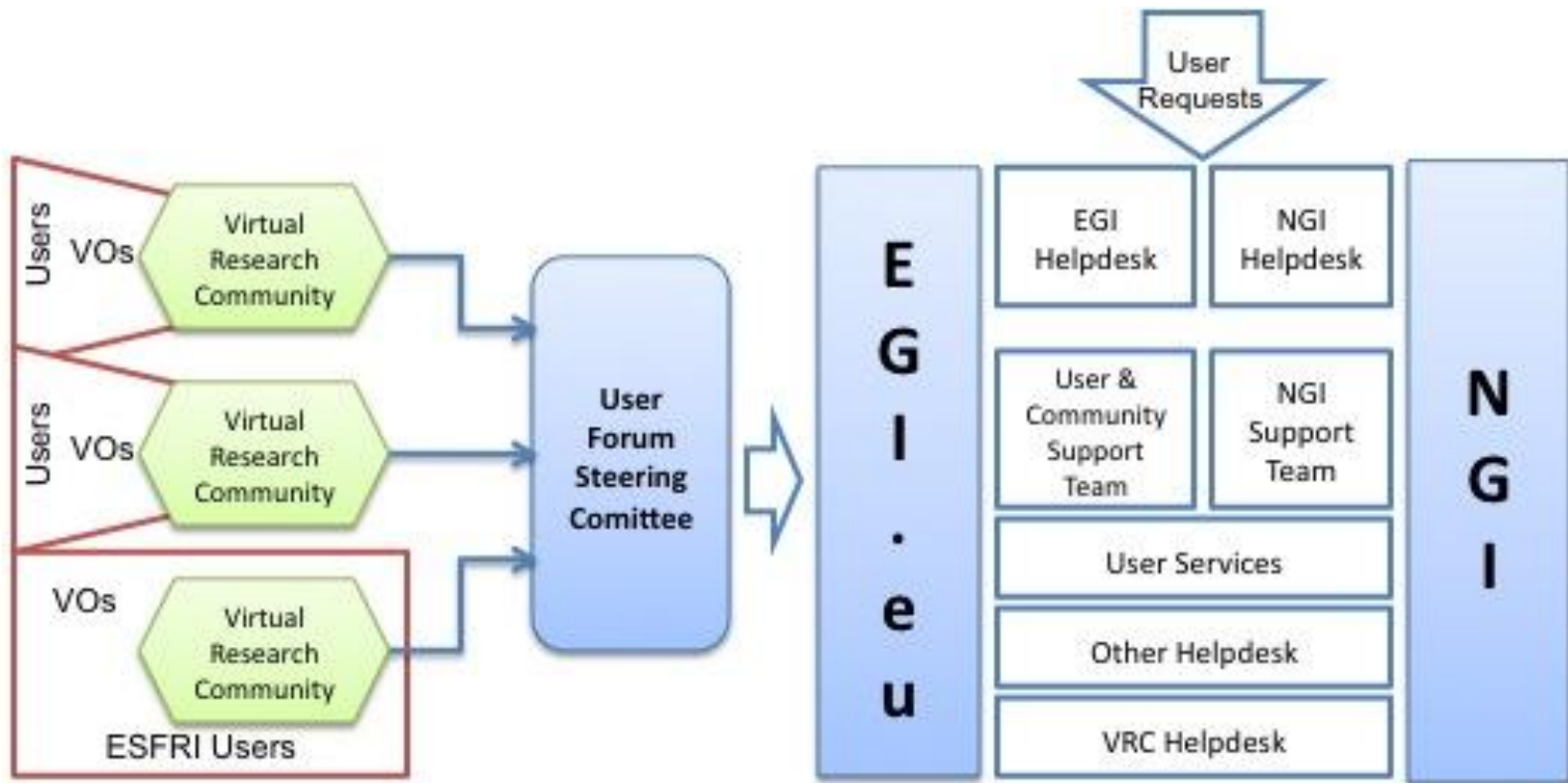
- **Continued operation and expansion** of today's production infrastructure
- “Set up an organisation that will enable the sustainable provision of grid services to the European scientific community”
  - **EGI global operations services**
  - **NGI/EIRO operations services**
- “The EGI should ensure a seamless and progressive transition in service provision from the current arrangements to a new scheme that is more sustainable organisationally and financially”
  - **Extension of accounting to support different business models**
- “The EGI should promote close collaboration and interoperability with similar infrastructures in other parts of the world.”
  - **Extension of operational procedures and policies**
  - **Enhancement of monitoring and accounting tools**

# User Support & Services in EGI

- Support User Communities
  - Researchers in International Collaborations
  - Scale up from the single VO to a community
- Provide a federated Helpdesk linking:
  - Discipline specific support (e.g. Bio Apps)
  - National infrastructure support (e.g. NGS)
  - Generic services (e.g. Training)
- Provide core services to support users
  - Manage VOs, Application DB, Training DB



# User Support & Services in EGI





- **EGI has begun to work**
  - A legal entity, EGI.eu has been created to coordinate the European Grid
- **EGI-InSPIRE will undertake the migration** of the European Grid e-infrastructure and its services into a new sustainable governance model
  - The NGIs are already supporting over 90% of the total costs implied by EGI-InSPIRE.
- **EGI will evaluate multiple sources of funding** including new business models where services are to be offered for a fee or alternative direct contributions

# The role of Ibergrid in EGI

**The Spanish and Portuguese NGIs have joined forces to take an active role in the global tasks of EGI**

**IBERGRID will operate inside EGI as a single entity**

**GLOBAL EGI TASKs UNDERTAKEN BY IBERGRID**

## •EGI Operations

- Middleware rollout will be coordinated from Ibergrid
- Accounting portal and operational developments related to accounting

## •EGI Technology

- Middleware certification and validation will be taken care by Ibergrid
  - **Definition of requirements for the UMD**
  - **Certification and validation process definition**

## •EGI Support to User Technical Service

- User Technical Services: tools available for user communities

- Common Portuguese/Spanish Iberian infrastructure
  - Grid computing, HPC
  - Network, Applications
  - Volunteer computing



- Provides an umbrella for an Iberian regional grid
  - Integrating Portuguese and Spanish NGI resources
  - Fully interoperable with EGI
- IBERGRID has taken the role of EGEE SWE ROC in EGI
  - Towards a sustainable model without losing synergies and advantages

# IBERGRID Transition Plan

## • Portugal Tasks

- ▶ Common VO management and coordination
- ▶ Operations portal
- ▶ Catalogues and services for the VOs
- ▶ Certification Authority for Portugal (LIPCA)

## • Spain Tasks

- ▶ Helpdesk (Request Tracker)
- ▶ Monitoring and accounting
- ▶ Infrastructure database (GOCDB/HGSM)
- ▶ Certification Authority (PKIrisGrid)
- ▶ Middleware security

## • Common Tasks

- ▶ Core services and redundancy
- ▶ Regional information system; Support groups
- ▶ Training infrastructure; Operations coordination
- ▶ Infrastructure security; Seed resources for new users

**EGEE**

### IBERGRID TRANSITION PLAN TO THE NATIONAL GRID INFRASTRUCTURE BASED MODEL

Document identifier: Ibergrid\_Transition\_Plan\_to\_EGI\_v14.doc

Date: 08/02/10

Country: Spain (ES) and Portugal (PT)

NGI: Ibergrid: NGI-ES + NGI-PT

Document status: 1st Public Release

Document link:

**Abstract:** This document describes the transition plan to migrate Ibergrid infrastructure into EGI. Ibergrid is composed by NGI-ES and NGI-PT.

# International Tasks

O-N-1	Operations of the NGI topology and configuration repository
O-N-2	Operation of the NGI accounting repository
O-N-3	Operation of monitoring and performance repositories
O-N-4	Operations of the NGI Operations Portal
O-N-5	NGI infrastructure oversight, Operators on duty, etc.
O-N-6	Operations of the NGI ticketing system
O-N-7	Regional Helpdesk
O-N-8	Operation of production core services for international VOs
O-N-9	Operations Coordination at the NGI level

# Operational Tools Status

Service	Responsible	Status
Regional Nagios	CESGA	Ready
HGSM	CESGA	Ready
Regional Accounting Portal	CESGA	Ready
Operations Portal	LIP	Under deployment
RT Ticketing System	IFCA/IFIC/RedIris	To be installed
SWE Helpdesk	IFIC	Ready
Infrastructure security	LIP/RedIris	Teams in place
Middleware security	UAB	Teams in place

# Central Services Status

Service	Instances	Status
WMS	CESGA/LIP/IFCA	Up and running
CrossBrokers	CESGA/LIP/IFCA	Up and running
TopBDII	CESGA/LIP/IFCA	Up and running
Main VOMS	LIP/IFCA	Up and running
Backup VOMS	CESGA	Up and running
LFC	LIP/IFCA	Up and running
Backup LFC	CESGA	Under deployment
My Proxy	LIP	Up and running
RGMA Registry	CESGA	Up and running



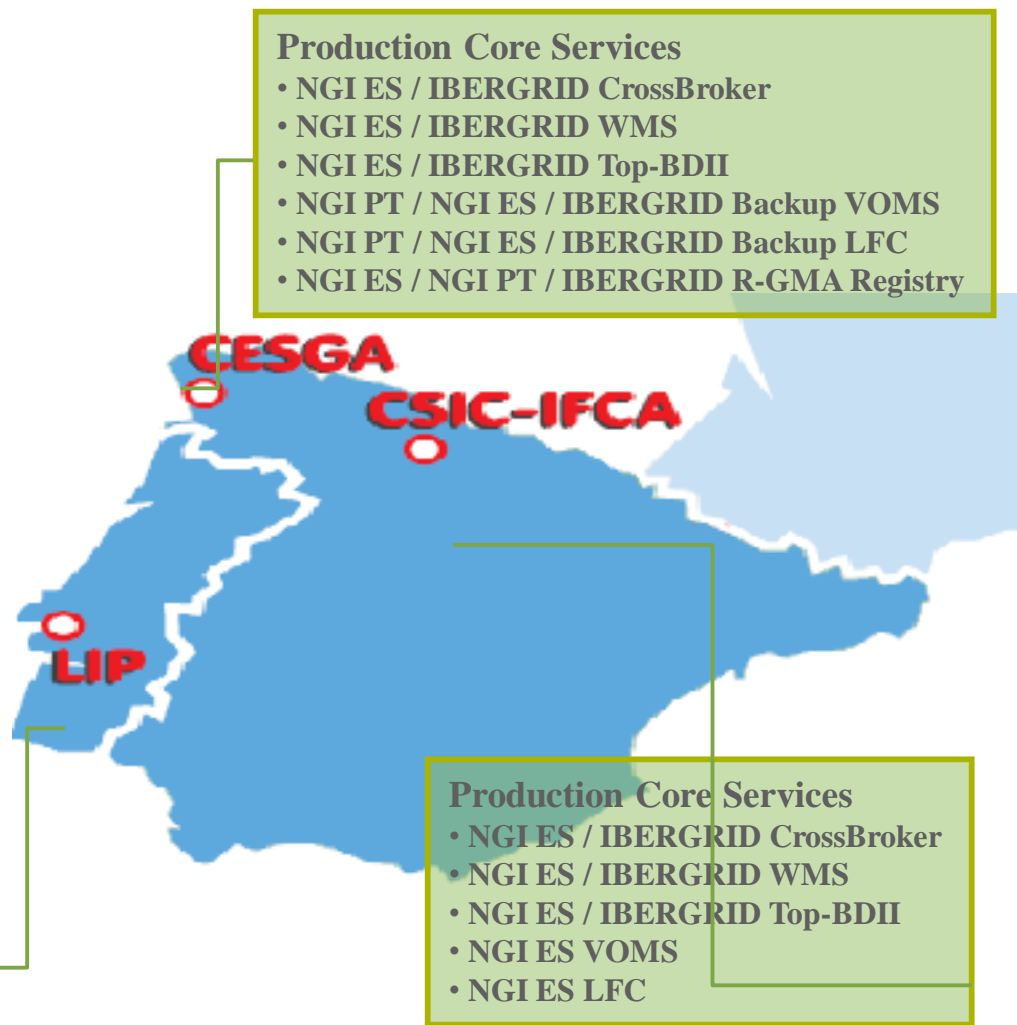
# IBERGRID Infrastructure

- **Core Resources**

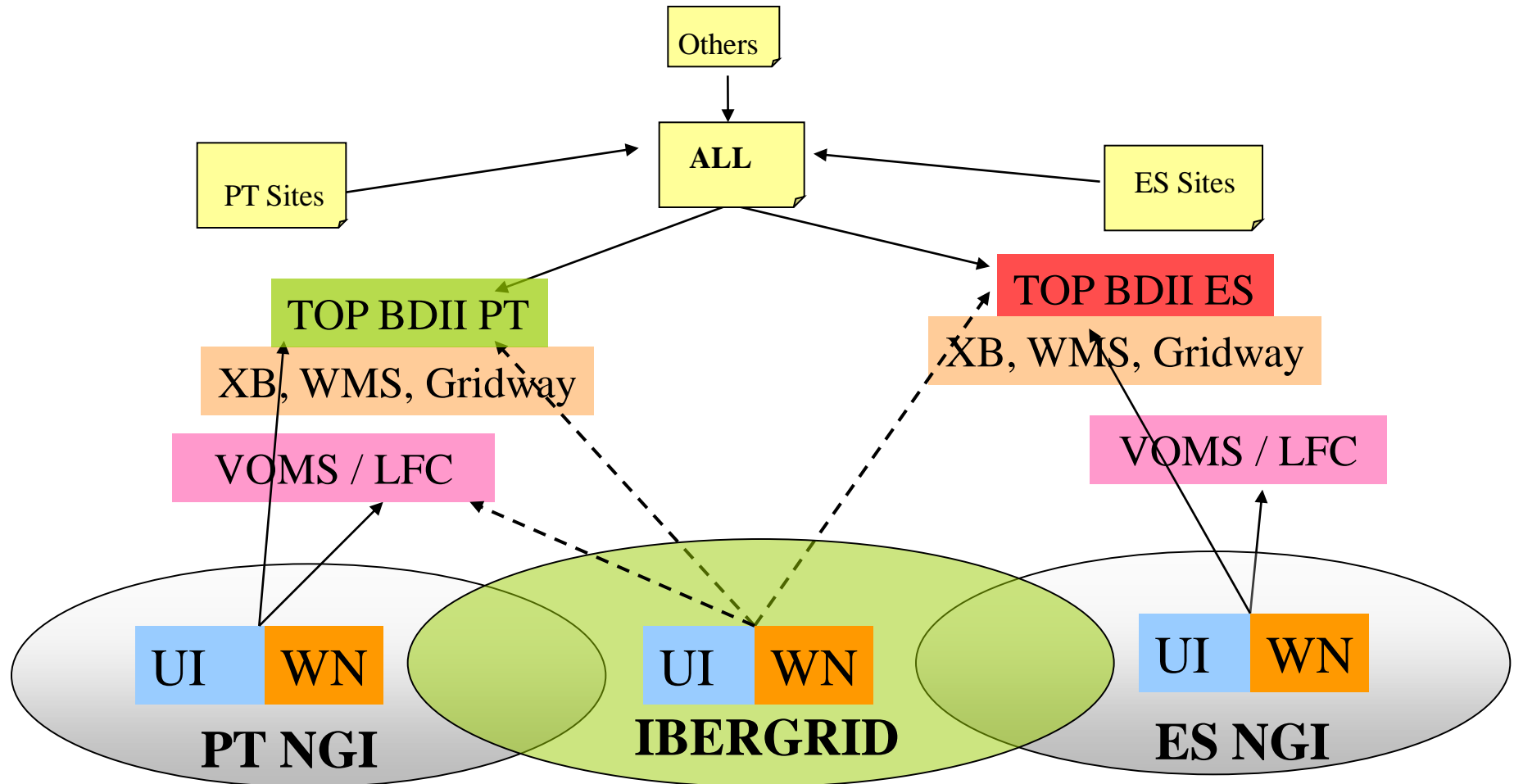
- ▶ Geographically spread
- ▶ Redundancy to failovers

- **34 sites**

- ▶ 8 Portuguese sites
- ▶ 1 site from Marrocco
- ▶ 25 Spanish sites
  - 16 sites in Certified status in GOCDB



# IBERGRID Infrastructure



# Global Tasks

<b>O-E-2</b>	<b>Accounting Repositories</b>	<b>CESGA</b>
<b>O-E-9</b>	<b>Middleware Rollout</b>	<b>LIP/IFCA/CESGA</b>
<b>U-E-5</b>	<b>User Technical Services</b>	<b>UPV/LIP</b>
<b>M-E-1</b>	<b>Documentation of the overall process</b>	<b>IFCA/LIP/CESGA</b>
<b>M-E-3</b>	<b>Definition and Assessment of Quality Criteria</b>	<b>IFCA/LIP/CESGA</b>

# ES-NGI Computational Resources

	<b>Cores de ejecución Año 2010</b>	<b>Almacenamien to Año 2010 (TB)</b>	<b>Prevision 2011 Cores de ejecución</b>	<b>Previsión 2011 Almacena miento online (TB)</b>
<b>IFCA</b>	1800	354	4000	1000
<b>CESGA</b>	477	144	1000	200
<b>CIEMAT (Moncloa)</b>	1116 (Moncloa)	370 (Moncloa)	posibles ampliaciones	450 mínimo
<b>CIEMAT CETA</b>	120	1	400	50
<b>UPV</b>	60	2	400	20
<b>IFIC</b>	1800	150	posibles ampliaciones	700
<b>PIC</b>	1318	1968	1800	2438
<b>BIFI</b>	280	1	3000	10

# Conclusions

- Ibergrid has transitioned to the new EGI ecosystem with a full production infrastructure and minimal impact
- An initial set of operational tools has been deployed
- Additional tools may be required but Ibergrid specific needs will be evaluated after the transition
- New computing models
  - Cloud computing as a new layer : grid to provide services base on cloud/virtual computing
  - HPC and hybrid computational models
  - Workflows
- Still a lot of uncertainty surrounding EGI and EMI
  - EMI started May 1
  - EGI-Inspire starts June 1