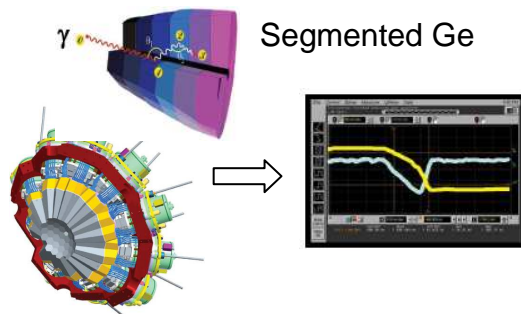


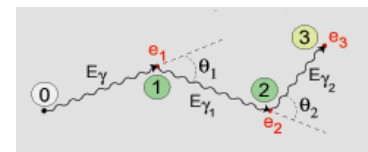
Application : AGATA Pulse Shape Analysis and γ -ray Tracking on the GRID



Pulse Shape Analysis
to decompose recorded
waves: **PSA Algorithm**

Identified
Interaction
(x, y, z, E, t)

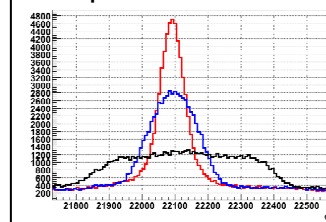
Reconstruction of tracks:
 γ -ray Tracking Algorithm



Adapted to Run on the GRID

**Reconstructed
 γ -ray**

Response of AGATA



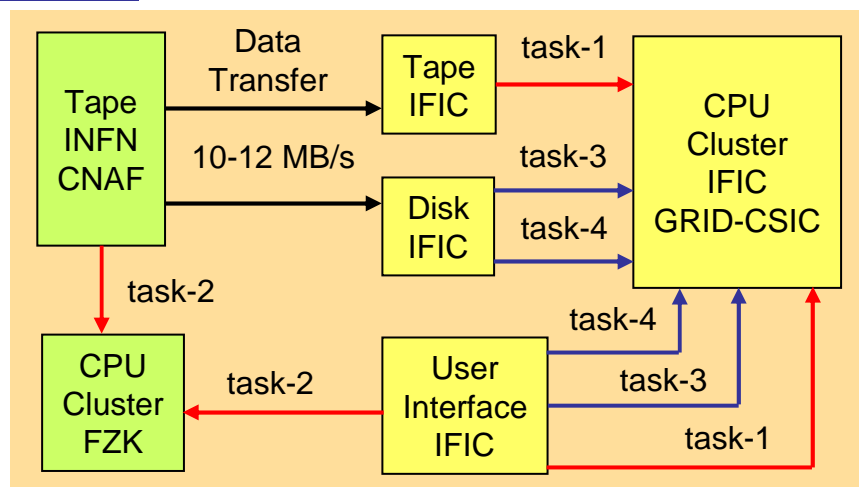
GRID Resources used :

GRID-CSIC : 50 cores (2GB per core, SLC5)
2.5 TB Disk storage (Lustre)

OTHERS : Additional storage 0.6 TB Tape (Castor)
Other EGEE clusters (CANF, FZK, MANCH.)



Tests and Results :



Task-1: 14 jobs, 0.6 TB data

Task-3: 14 jobs, 0.6 TB data

Task-2: 40 jobs, 2.0 TB data

Task-4: 49 jobs, 2.1 TB data

