

**252188 Cylindrical He3 Neutron Detector****GENERAL SPECIFICATIONS**

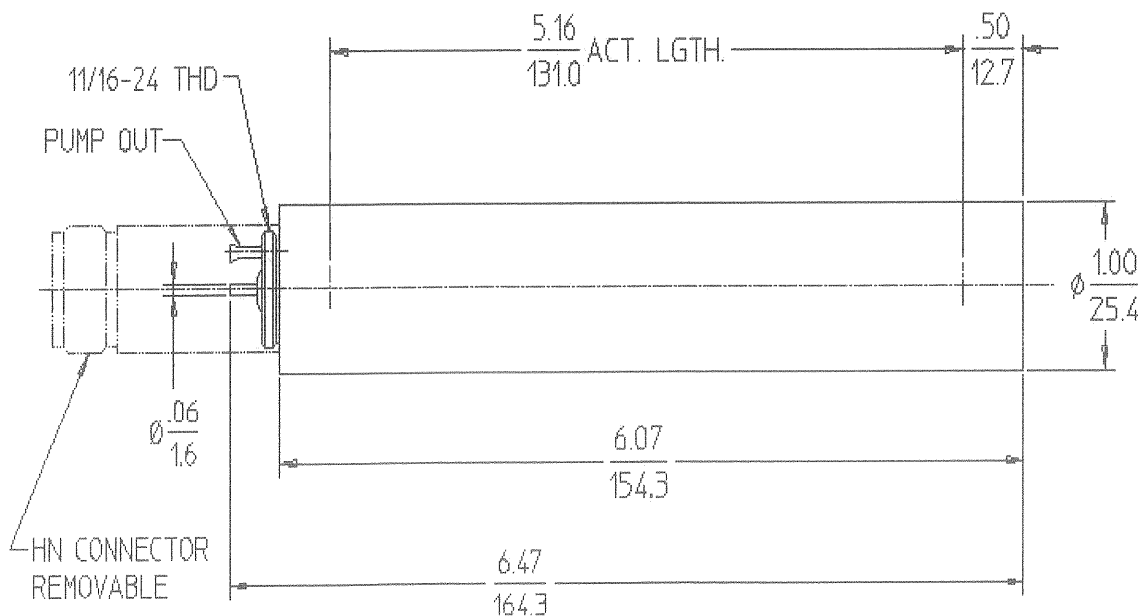
Gas pressure torr	15200
Cathode material	Stainless Steel
Maximum length (inch/mm)	6.47/164.3
Effective length (inch/mm)	5.16/131.0
Maximum diameter (inch/mm)	1.0/25.4
Effective diameter (inch/mm)	0.96/24.38
Connector	HN Optional
Effective volume cm <sup>3</sup>	61.17
Operating temperature range °C	-50 to +100

**ELECTRICAL SPECIFICATIONS**

Recommended operating voltage volts	1620
Operating voltage range volts	1500 - 1750
Maximum plateau slope ( % / 100 volts )	1
Maximum resolution ( % fwhm)	10
Tube capacitance pf	4
Weight grams	178

**THERMAL NEUTRON SENSITIVITY**

Sensitivity (cps / nv)	145
------------------------	-----

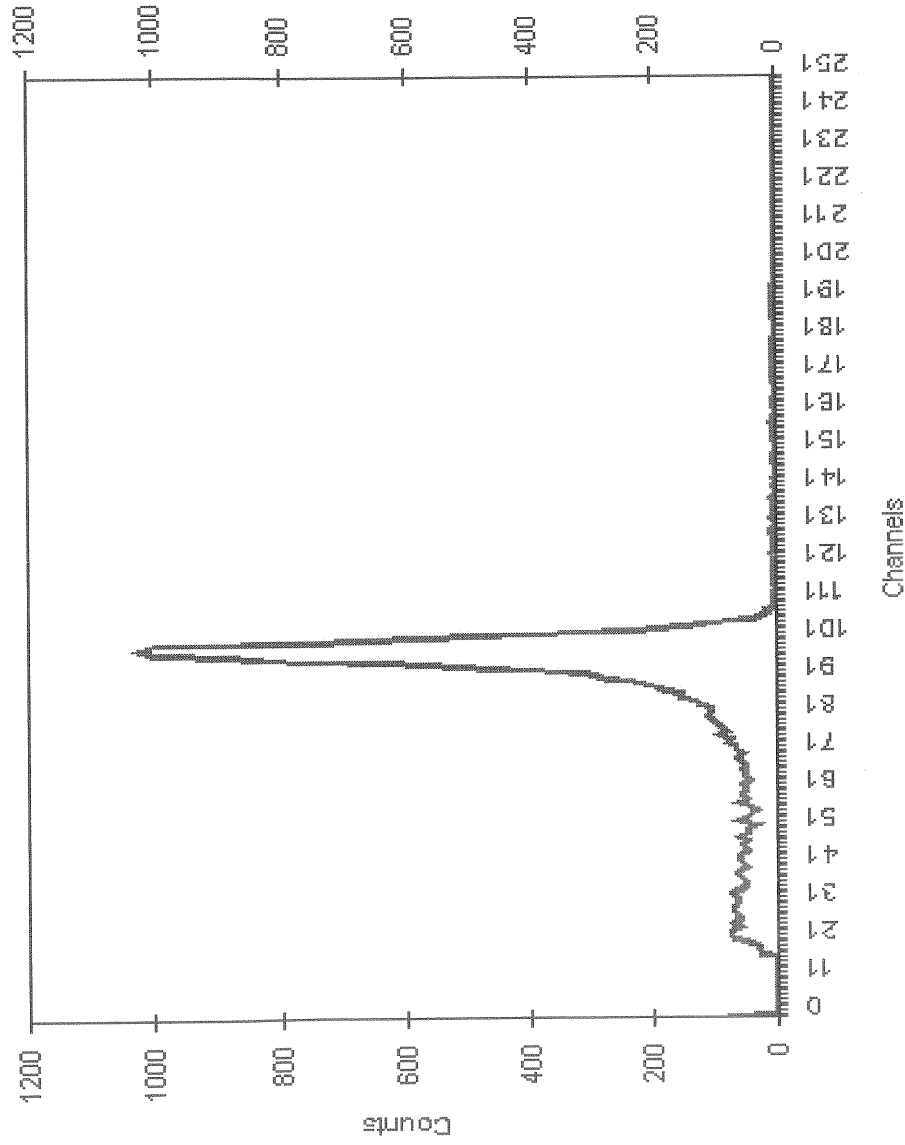


# LND, INC.

Cust P.O.# QUOTE 1101  
 Tube Type 252251  
 Serial Number 245083  
 Oper Volts 1621  
 Volt Range 1500 - 1750  
 FWHM 7.59

LND Job# 17694-00  
 Source Pu-Be  
 Plateau Slope(%/100V) <3  
 PulseHeight(Volts) 1mV  
 Charge/Pulse 1.0E-13  
 Date 01/16/09

E-Mail: [info@lndinc.com](mailto:info@lndinc.com) Web Site: <http://www.lndinc.com>  
 3230 Lawson Blvd., Oceanside NY 11572 Phone:(516) 678-6141 Fax:(516) 678-6704



Exit Window  
 Window Material N/A  
 Areal Density(mg/cm²) N/A  
 Thickness(inches/mm) N/A

Entrance Window  
 Window Material N/A  
 Areal Density(mg/cm²) N/A  
 Thickness(inches/mm) N/A

Gas Filling He3, Co2  
 Gas Press(Torr) 15200  
 Connector Type SHV